



GHANA CIVIL AVIATION AUTHORITY

PHONE: +233 -302- 776171 EXT.1374 FAX : +233- 302- 770329 AFTN : DGAAANYX E-MAIL: aispublication@caa.com.gh	GHANA CIVIL AVIATION AUTHORITY AERONAUTICAL INFORMATION SERVICES PRIVATE MAIL BAG KOTOKA INTERNATIONAL AIRPORT, ACCRA	AIC 014/20 31 DEC 2020
---	--	--

Effective Date	01 January 2021
-----------------------	------------------------

**GUIDELINES FOR INTERNATIONAL FLIGHT OPERATIONS ON COVID-19
SAFETY AT THE KOTOKA INTERNATIONAL AIRPORT**

INTRODUCTION

Following the declaration of the novel Corona Virus Disease 2019 (COVID-19) as a global Public Health Emergency of International Concern on 30th January 2020, several States instituted measures to curb the spread of the disease. In Ghana, similar measures were instituted in addition to Executive Instrument (EI) 61 requiring some practices to be enforced.

The Ghana Health Service/Ministry of Health has instituted measures at the Kotoka International Airport (KIA), to prevent and control the spread of COVID-19 in Ghana related to international travel. The outlined measures below are applicable to flight crew and passengers arriving and/or departing KIA until further advised.

GENERAL

The Ghana Health Service in collaboration with other partners will provide Port Health Services to ensure safety of flight crew, passengers, and users of the airport. Port Health Services at the airport includes all health-related activities within the terminal including laboratory testing, inspection of relevant health documents, screening and triaging of passengers and the management of ill persons including transfer to appropriate health facilities, environmental inspections, supervision of cleaning and disinfection of aircraft and the entire airport terminal, among others.

**COVID-19 PROTOCOLS OBSERVATION FOR AIRCRAFT OPERATORS AND
FLIGHT CREW**

Airline crew arriving or departing on international flights at the KIA including those from the ECOWAS region will be required to meet the health requirements outlined below prior to admission into Ghana by the Ghana Immigration Service.

1. Crew Members on Departing Flights

All crew members on international flights departing KIA must adhere to COVID-19 testing requirements for the destination countries. In addition, they must always wear a face mask appropriately (extending from the middle of the nasal bridge to halfway between the chin and the neck) and adhere to social distancing and hygiene protocols.

- 2. Crew Members on Arriving Flight** Crew members must not have any symptoms suggestive of COVID-19 including body temperature $>38^{\circ}\text{C}$. All persons must be wearing face mask appropriately upon arrival (extending from the middle of the nasal bridge to halfway between the chin and the neck) and adhere to social distancing and hygiene protocols.

COVID-19 PROTOCOLS OBSERVATION FOR DEPARTING AND ARRIVING PASSENGERS

All passengers departing or arriving on international flights at KIA including those from the ECOWAS region will be required to meet the health requirements outlined below prior to admission into Ghana by the Ghana Immigration Service.

3. Departing Passengers

All passengers on international flights departing KIA will be required to adhere to COVID-19 testing requirements for the destination countries. All persons must be wearing a face mask appropriately (extending from the middle of the nasal bridge to halfway between the chin and the neck) and adhere to social distancing and hygiene protocols. Departing passengers will undergo COVID-19 screening including the checking of temperature.

Only passengers and persons with business in the terminal will be allowed entry to the Departure Hall. Online check-in or the use of self-service kiosks is strongly encouraged to reduce physical contact at the airport. Passengers are advised to arrive at the airport at least 4 hours before the scheduled departure time.

4. Arriving Passengers

All arriving passengers must not have any symptoms suggestive of COVID-19 including body temperature $>38^{\circ}\text{C}$. They must be in possession of a COVID-19 negative PCR test result from an accredited laboratory in the country of origin. The test should have been done not more than 72 hours before the scheduled departure time from the country of origin. For passengers who transit through other countries before arriving in Ghana, the first country of departure will be the reference point. For passengers who depart Ghana and return within one (1) week, the passengers will not be required to present a COVID-19 test result from the country of departure. A negative COVID-19 test from Ghana used on departure will serve as evidence of meeting the COVID-19 test criteria for arriving in Ghana.

In addition, all persons must be wearing face mask appropriately upon arrival (extending from the middle of the nasal bridge to halfway between the chin and the neck). All passengers will be

subjected to a mandatory COVID-19 test at the airport terminal at the cost of \$150 to be borne by the passenger. Payment can be made online at <https://myfrontierhealthcare.com/Home/Ghana>. Any passenger who is unable to pay online will be required to make payment on arrival for the test.

All arriving passengers who test positive for COVID-19 will undergo a seven (7) day mandatory isolation and treatment at a designated health facility or isolation centre. However, the final discharge of cases will be based on existing case management guidelines and protocols.

All passengers who test negative for COVID-19 will be required to continuously adhere to COVID-19 safety protocols and will receive regular information on COVID-19 within five (5) days of arrival in Ghana.

5. Sanctions

Airlines that board passengers without a PCR test result or a Positive PCR test result will be sanctioned and fined US\$3,500 per passenger. Non-Ghanaian passengers may be refused entry and returned to the point of embarkation at a cost to the Airline. Ghanaians will have their passports seized and will be allowed entry but subject to 14 days of mandatory quarantine at a facility approved by the Government and at a cost to the passenger.

6. Exemptions

The following categories of passengers and crew are exempt from COVID-19 PCR Testing

- i) Children under-5 years of age will not be required to undergo testing at the airport.
- ii) Children between the ages of 5-12 years will undergo testing on arrival free of charge.
- iii) Persons who arrive under emergency circumstances such as diverted flights will not be required to undergo testing if they do not leave the airport or if they remain in transit such that they do not leave the hotel.
- iv) Airline crew are exempt from the pre-departure and arrival testing and should follow airline policy for testing.

7. Travelling with Pets

- i) Travelling with pets into Ghana is allowed in line with guidelines of the Veterinary Services Directorate of the Ministry of Food & Agriculture

8. Transit Passengers

- i) Passengers transiting and transferring through Accra will not be required to take the COVID-19 test in Accra.
- ii) Transit passengers will be required to adhere to COVID-19 testing requirements for the destination countries.

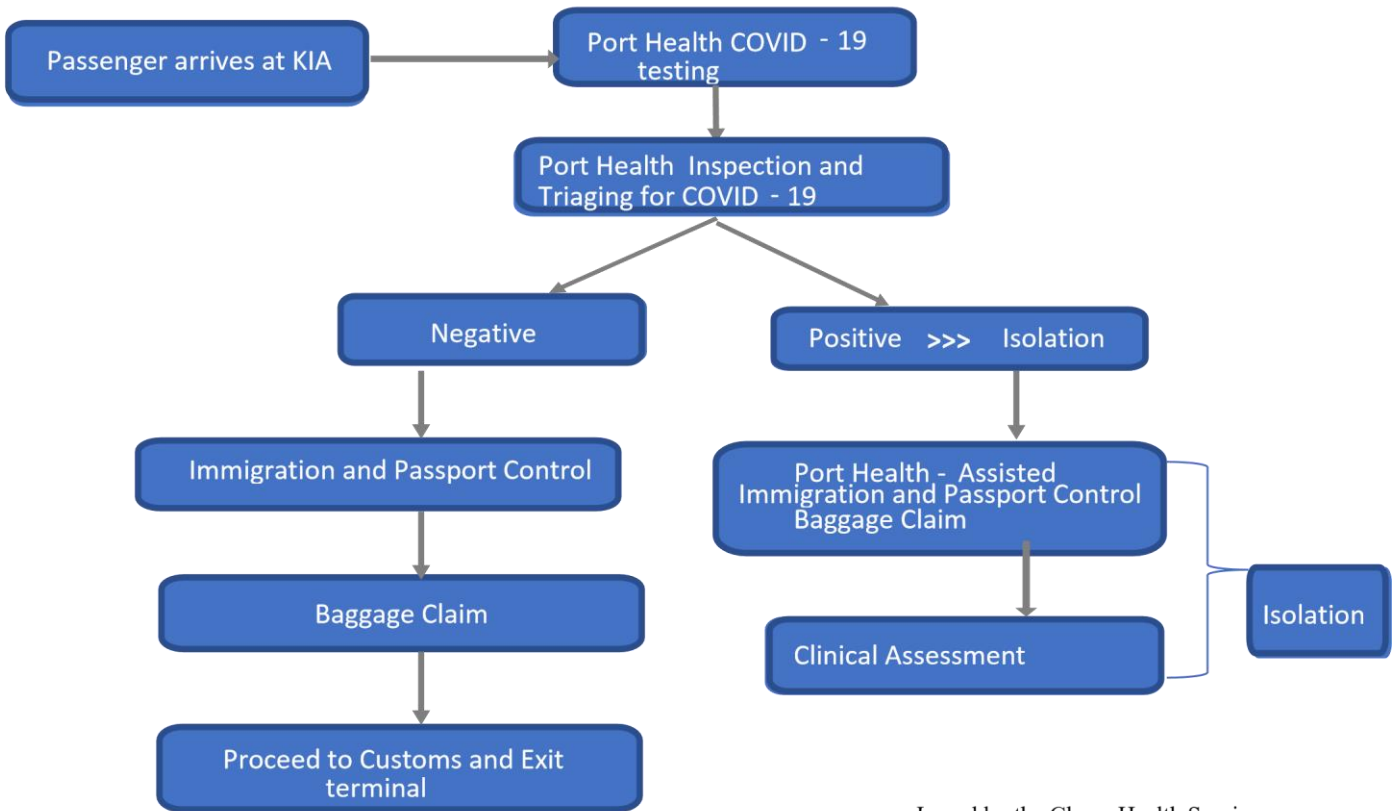
Management of Confirmed Cases of COVID-19

All persons testing positive will receive further clinical assessment and treatment. Confirmed COVID-19 positive passengers will be handled by the Port Health Unit for the remainder of their

arrival processes. Following completion of the arrival procedures, they will be sent to the Ga East Municipal Hospital for further clinical assessment and management. All persons testing negative will be advised to continue to observe COVID-19 safety precautions following arrival in Ghana.

Please see attached Figure 1: Passenger flow for International Arrivals at the Kotoka International Airport -

Figure 1:



This AIC replaces AIC 012/20

**OBED ABINA
FOR: DIRECTOR-GENERAL**